

Drapery Hardware
Wrought Iron

Kirsch



A stylish solution.

WROUGHT IRON

Old World Spanish influences embrace modern touches in the Kirsch® Wrought Iron Collection. Kirsch designers, in concert with interior designers from around the country, shaped this exciting collection that ranges from classic profiles to unmistakably modern motifs. Single and double brackets, holdbacks, rings, finials and a stoutly-made 1" rod dazzle in five finishes: Black, Rust, Iron Oxide, Iron Gold, and Antique Pewter. A striking expression that is both organic and sophisticated, the new Wrought Iron Collection can complement any interior design vision.



Bird Cage finial with rings and pole in Black finish with coordinating holdbacks from the Wrought Iron collection.

Cover: Crown Palace finial, rings and pole in Black

Color photography in print may vary slightly from actual finished product.
Please confirm your color selection with the Kirsch Swatch Card or Kirsch Display Board.

WROUGHT IRON
Finials

Bird Cage – 56350

SHOWN IN ANTIQUE PEWTER 011



Black
770



Rust
777



Iron Oxide
802



Iron Gold
801

Size: 5¼" L x 2¾" W x 2¾" H, .75 lbs.

Pedestal Ball – 56351

SHOWN IN BLACK 770



Rust
777



Iron Oxide
777



Iron Gold
801



Antique Pewter
011

Size: 4½" l x 2½" w x 2½" h, .95 lbs.

Leaf Scroll – 56352

SHOWN IN RUST 777



Black
770



Iron Oxide
802



Iron Gold
801



Antique Pewter
011

Size: 4½" l x 4¾" w x 2" h, 1.65 lbs.

Acanthus Arrow – 56353

SHOWN IN IRON GOLD 801



Black
770



Rust
777



Iron Oxide
802



Antique Pewter
011

Size: 5½" l x ¾" w x 2½" h, .95 lbs.

Pine Cone – 56354

SHOWN IN IRON OXIDE 802



Black
770



Rust
777



Iron Gold
801



Antique Pewter
011

Size: 4½" l x 3¾" w x 3¾" h, 2 lbs.

WROUGHT IRON
Finials

Beveled Brick – 56355

SHOWN IN ANTIQUE PEWTER 011



Black
770



Rust
777



Iron Oxide
802



Iron Gold
801

Size: 4"l x 1¼"w x 1¼"h, 1.45 lbs.

Crown Palace – 56356

SHOWN IN BLACK 770



Rust
777



Iron Oxide
777



Iron Gold
801



Antique Pewter
011

Size: 3¾"l x 3⅞"w x 3⅞"h, .5 lbs.

Inner Lace – 56357

SHOWN IN RUST 777



Black
770



Iron Oxide
802



Iron Gold
801



Antique Pewter
011

Size: 5"l x ½"w x 3⅞"h, .65 lbs.

Petite Modern Ball – 56373

SHOWN IN IRON GOLD 801



Black
770



Rust
777



Iron Oxide
802

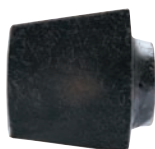


Antique Pewter
011

Size: 2"l x 1¼"w x 1¼"h

Petite Faucet – 56374

SHOWN IN IRON OXIDE 802



Black
770



Rust
777



Iron Gold
801



Antique Pewter
011

Size: 1¾"l x 1¼"w x 1¼"h

WROUGHT IRON
Components

End Cap – 56358
SHOWN IN IRON GOLD 801



Black
770



Rust
777



Iron Oxide
802



Antique Pewter
011

Size: 7/8"l x 2"w x 2"h, .40 lbs.

Swivel Socket – 563367
SHOWN IN ANTIQUE PEWTER 011



Swivel Socket also available in: 770, 777, 801 and 802

1" Diameter Poles
56359 – 6' Pole, 5lbs per ft.
56360 – 8' Pole, 5 lbs per ft.

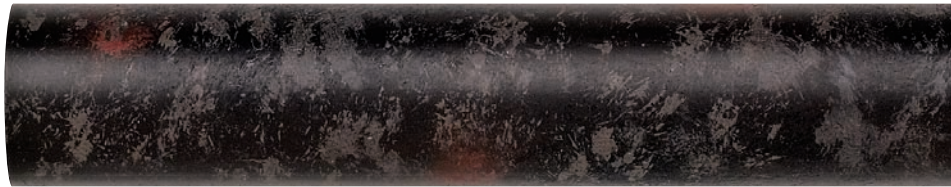
Poles can easily be spliced together to accommodate a specific width. Splice part number is 56366.



Black
770



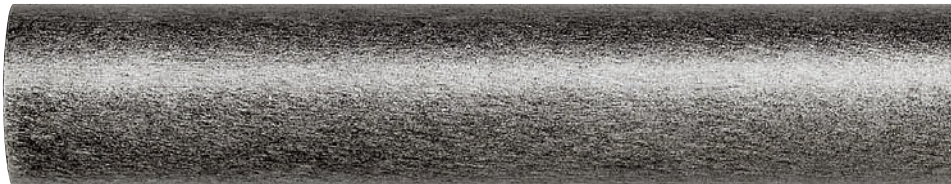
Rust
777



Iron Oxide
802



Iron Gold
801



Antique Pewter
011

WROUGHT IRON
Accessories

3½" Bracket – 56362
SHOWN IN ANTIQUE PEWTER 011



Black
770



Rust
777



Iron Oxide
802



Iron Gold
801

Projection: 3½"
Size: 4⅞"l x ⅝"w x 4"h, .75 lbs.

5½" Bracket – 56363
SHOWN IN BLACK 770



Rust
777



Iron Oxide
802



Iron Gold
801



Antique Pewter
011

Projection: 5½"
Size: 6¼"l x ⅝"w x 4¼"h, .95 lbs.

7½" Bracket – 56364
SHOWN IN RUST 777



Black
770



Iron Oxide
802



Iron Gold
801



Antique Pewter
011

Projection: 7½"
Size: 8⅞"l x ¾"w x 4¼"h, .95 lbs.

Double Bracket – 56365
SHOWN IN IRON GOLD 801



Black
770



Rust
777



Iron Oxide
802



Antique Pewter
011

Uses 1" rod for inner
and outer diameter rod

Outside Projection: 6½"
Inside Projection: 3½"
Size: 7½"l x ⅝"w x 5⅞"h, 1.65 lbs.

Center Bypass
Bracket – 56372

SHOWN IN IRON GOLD 801



*Does not include set screw



Black
770



Rust
777



Iron Oxide
802



Antique Pewter
011

Uses 1" rod for inner and outer
diameter rod. In order to secure
the pole properly, use with two
outer brackets (56362) and C
rings only (56371)

Projection: 3½"
Size: 4⅞"l x ⅝"w x 4"h, .75 lbs.

WROUGHT IRON
Accessories

Inside Mount
Socket – 56370

SHOWN IN ANTIQUE PEWTER 011



Black
770



Rust
777



Iron Oxide
802



Iron Gold
801

Uses 1" rod between two facing walls

Eyelet Rings
with Clips – 56370

SHOWN IN BLACK 770



Rust
777



Iron Oxide
802



Iron Gold
801



Antique Pewter
011

Inside Diameter 1 1/8"
Outside Diameter 2 1/8"
Eyelet Pin Setting: 1/2"

C-Rings
with Eyelet – 56371

SHOWN IN RUST 777



Black
770



Iron Oxide
802



Iron Gold
801



Antique Pewter
011

C-Rings have a space that allows the rings to be drawn across the Kirsch Center Bypass Bracket. (56372). Best when used with Baton (56375) and Center Bypass Bracket (56372).

Inside Diameter 1 1/8"
Outside Diameter 2 1/8"
Eyelet Pin Setting: 1/2"

Baton – 56375

SHOWN IN BLACK 770



Rust
777



Iron Oxide
802



Iron Gold
801



Antique Pewter
011

The Baton is a decorative accent used for opening and closing drapes. Length - 36 inches, and is attached to a C-Ring, used as a leading edge ring. Best paired with C-Rings (56371) and Center Bypass Bracket (56372).

Inside Diameter 1 1/8"
Outside Diameter 2 1/8"
Eyelet Pin Setting: 1/2"

WROUGHT IRON
Accessories

Holdback Base – 56368

SHOWN IN RUST 777



Black
770



Iron Oxide
801



Iron Gold
802



Antique Pewter
011

Holdback Base to be used with Kirsch 1" Finials and/or end caps.

Size: 4⁷/₈" l x 3¹¹/₁₆" w x 3¹¹/₁₆" h, 1.40 lbs.

Splice – 56366

AVAILABLE IN ZINC PLATED 061



In order to create longer poles, this splice can be used to join two poles. Insert the splice into both poles so that the two poles meet in the middle of the splice. A bracket should be installed at the placement of the splice.

Size: 6" long

Finial Plugs – 56369

AVAILABLE IN CLEAR PLASTIC 058



Kirsch Wrought Iron Finials are packaged in pairs. The finials screw directly into a finial plug, making it easy to keep them even and level every time. Two finial plugs are included with every pair of finials and end caps and can also be purchased separately. The finial plugs can be used on the Kirsch 1" Wrought Iron Pole and the Kirsch Wrought Iron Holdback Arm.

Molly Anchor – Included



As a convenience, we include two Molly Anchors with each bracket and holdback arm that can be used with 1/2" drywall (the most common residential sheetrock).

kirsch[®]

Kirsch Division of Newell Window Furnishings Inc. ©2013
3 Glenlake Parkway, Atlanta, GA 30328
1-800-538-6567, www.kirsch.com

NewellRubbermaid
Brands That Matter



F0380007/12R303